

## remanium® star CL powered by Dentaureum

CoCrW-alloy (powder) acc. to EN ISO 9693/DIN EN ISO 22674, Type 5

CE 0483

remanium® star CL is a CoCrW alloy for the production of metallic restorations by means of the metal laser melting process. remanium® star CL is approved for use on laser melting machines

27

Co

58,933

### RANGE OF APPLICATION

Crowns and bridges, frames for metal ceramic veneering, cast partials, primary – and secondary parts for combined restorations.

### CHEMICAL COMPOSITION

| Component | Mass (%) |
|-----------|----------|
| Co        | 60,5     |
| Cr        | 28       |
| W         | 9        |
| Si        | 1,5      |

Other elements <1 %: Mn, N, Nb, Fe. free from nickel, beryllium and gallium

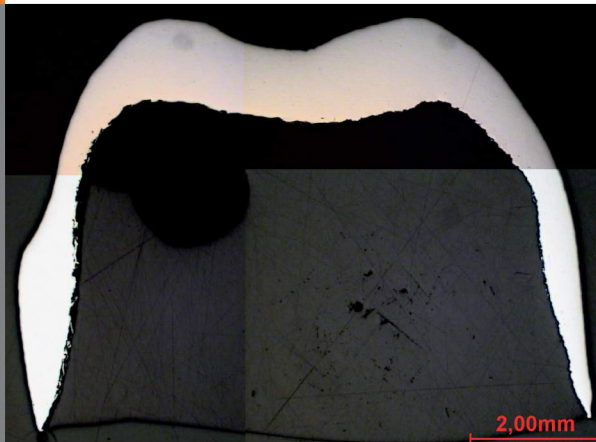
**TECHNICAL DATA IN LINE WITH DIN EN ISO 9693 / DIN EN ISO 22674  
AFTER RECOMMENDED HEAT TREATMENT**

|  |   |
|--|---|
| Yield Strength $R_{p0,2}$  | 635 MPa   |
| Tensile Strength $R_m$   | 1030 MPa  |
| Elongation at fracture $A_5$   | 10 %  |
| Modulus of elasticity E  | 230.000 MPa                                     |
| Melting range $\Delta$   | 1320-1420°C                                     |
| Density $\rho$   | 8,6 g/cm <sup>3</sup>                           |
| Coefficient of thermal expansion TEC (25-500°C)  | 14,1 x 10 <sup>-6</sup> K <sup>-1</sup>         |
| Colour   | white   |
| Metal- ceramic bond strength acc. to EN ISO 9693, 3-Pt.- bending test (min. 25 MPa acc. to EN ISO 9693)                  | 40 MPa (Carmen CCS, Dentaureum)                 |
| Type   | 5   |
| Biocompatibility, L 929-Proliferation acc. to EN ISO 10993-5, -12, ISO 9363-1, LM SOP 4-06-01                            | No deliberation of cell toxic active substances |
| Corrosion resistance, static immersion test acc. to EN ISO 10271 (max. 200 µg/cm <sup>2</sup> x 7d acc. to EN ISO 22674) | Ion release 3,5 µg/cm <sup>2</sup> x 7d         |

**remanium® star CL**  
powered by Dentaureum

**MICROSECTION**

3-unit bridge (16 x)



3-unit bridge etched (100 x)

