

rematitan[®] CL powered by Dentaurum

Titanium alloy (powder) acc. to EN ISO 9693/DIN EN ISO 22674, Type 4

 0483

rematitan[®] CL is a TiAlV-alloy for the production of metallic restorations by means of the metal laser melting process. rematitan[®] CL is approved for use on laser melting machines

22

Ti

47,88

RANGE OF APPLICATION

Crowns and bridges, frames for metal ceramic veneering, cast partials, primary – and secondary parts for combined restorations, implant supra-constructions.

CHEMICAL COMPOSITION

Component	Mass (%)
Ti	90
Al	6
V	4
Other elements <1 %: N, C, H, Fe, O	



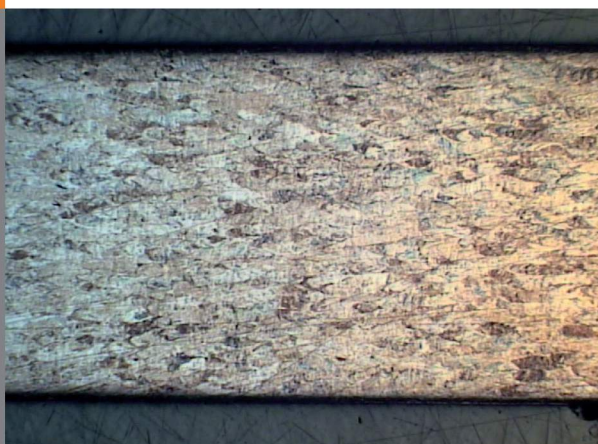
**TECHNICAL DATA IN LINE WITH DIN EN ISO 9693 / DIN EN ISO 22674
AFTER RECOMMENDED HEAT TREATMENT**

Yield Strength $R_{p0,2}$	950 MPa
Tensile Strength R_m	1005 MPa
Elongation at fracture A_5	10 %
Modulus of elasticity E	115.000 MPa
Melting range Δ	1604-1655°C
Density ρ	4,5 g/cm ³
Coefficient of thermal expansion TEC (25-500°C)	10,16 x 10 ⁻⁶ K ⁻¹
Colour	white
Metal- ceramic bond strength acc. to EN ISO 9693, 3-Pt. - bending test (min. 25 MPa acc. to EN ISO 9693)	37 MPa (Triceram, Dentaaurum)
Type	4
Biocompatibility, L 929-Proliferation acc. to EN ISO 10993-5, -12	No deliberation of cell toxic active substances
Corrosion resistance, static immersion test acc. to EN ISO 10271 (max. 200 µg/cm ² x 7d acc. to EN ISO 22674)	Ion release 1,41 µg/cm ² x 7d



MICROSECTION

Test piece etched (20 x)



Test piece etched (100 x)

