

remanium® star CL powered by Dentaureum

CoCrW-alloy (powder) acc. to EN ISO 9693/DIN EN ISO 22674, Type 5

CE 0483

remanium® star CL is a CoCrW alloy for the production of metallic restorations by means of the metal laser melting process. remanium® star CL is approved for use on laser melting machines

27

Co

58,933

RANGE OF APPLICATION

Crowns and bridges, frames for metal ceramic veneering, cast partials, primary – and secondary parts for combined restorations.

CHEMICAL COMPOSITION

Component	Mass (%)
Co	60,5
Cr	28
W	9
Si	1,5

Other elements <1 %: Mn, N, Nb, Fe. free from nickel, beryllium and gallium

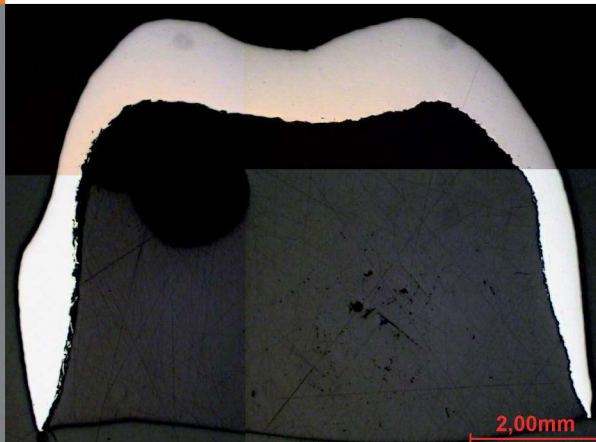
**TECHNICAL DATA IN LINE WITH DIN EN ISO 9693 / DIN EN ISO 22674
AFTER RECOMMENDED HEAT TREATMENT**

Yield Strength $R_{p0,2}$	635 MPa
Tensile Strength R_m	1030 MPa
Elongation at fracture A_5	10 %
Modulus of elasticity E	230.000 MPa
Melting range Δ	1320-1420°C
Density ρ	8,6 g/cm ³
Coefficient of thermal expansion TEC (25-500°C)	14,1 x 10 ⁻⁶ K ⁻¹
Colour	white
Metal- ceramic bond strength acc. to EN ISO 9693, 3-Pt.- bending test (min. 25 MPa acc. to EN ISO 9693)	40 MPa (Carmen CCS, Dentaureum)
Type	5
Biocompatibility, L 929-Proliferation acc. to EN ISO 10993-5, -12, ISO 9363-1, LM SOP 4-06-01	No deliberation of cell toxic active substances
Corrosion resistance, static immersion test acc. to EN ISO 10271 (max. 200 µg/cm ² x 7d acc. to EN ISO 22674)	Ion release 3,5 µg/cm ² x 7d

remanium® star CL
powered by Dentaureum

MICROSECTION

3-unit bridge (16 x)



3-unit bridge etched (100 x)

